



AN ISO 9001 : 2008 Company

 [hiclass.co.in](http://hiclass.co.in)



# Hi-Class<sup>®</sup>

*Style & Luxury at Economy*



AN ISO 9001 : 2008 Company



Kitchens have evolved from confined spaces filled with cookware and culinary aromas to absolute elegance and intelligently designed spaces.

HI-CLASS a steel wire kitchen accessories manufacturer has achieved significant brand recognition and high esteem. We excel at designing kitchens with the most ideal combination of cutting-edge accessories and high-quality components.

HI-CLASS offers an exclusive collection of designer lifestyle accessories that are both functional and stylish. Our company believes in the importance of providing customers with top-quality products and service. To ensure this, we have self-monitored departments that oversee the entire process, from sourcing raw materials to delivering finished goods.

HI-CLASS is known for diligence and attention to detail, which is evident in every aspect of our operations. We have introduced a new range of kitchen accessories and hardware products that incorporate the latest technology, high-quality materials and proper standardized testing (Cycle test & Salt- Spray test) to produce modern and exceptional products.

Our company provides comprehensive warranties and after sales support, and has established a strong market presence throughout India. Our vision is to gift you a world of excellence and new-age décor in that one small space of your house to hold stories beyond cooking.

## Index

EMERALD SERIES	4-13
OPAL SERIES	14-25
RUBY SERIES	28-31
APEX SERIES	32-34
VELVET SERIES	35-38
ELITE SERIES	39-47
PEARL SERIES	48-51
UTILITY ACCESSORIES	52-58





# EMERALD SERIES





051

# GLASS PANTRY P/O (SOFT CLOSE)



SIZE	ITEM CODE
450mm-4FT	HE-GP01
450mm-6FT	HE-GP02
600mm-4FT	HE-GP11
600mm-6FT	HE-GP12



## FUNCTION

The rack can be smoothly slid with a fully concealed soft-closing system.

## FEATURE

In addition to the basket buckle design, the height and the spacing can also be adjusted and controlled to meet the needs of all bottle sizes.

## DESIGN

Designed with a new environmental protection material, the basket is not only sturdy and beautiful, but also has more bearing force because it is made from two special boards. European make more decorative and chic.

## MATERIAL

A heavy earth and earth damping guide rail are used, along with a thickened carbon steel frame and super bearings. Around the edge, there is high-quality toughened glass that can be removed and material is easy to care for.

## INSTALLATION

The optimum cabinet board thickness is 18 mm, which is suitable for standard cabinets.





## Universal Magic Corner (SOFT CLOSE)

SIZE	ITEM CODE
900-1000 mm	HE-UM01



### FEATURE

To increase the strength all of the supporting components are made of die-cast with zinc alloy. European make, made the entire ambry more stylish and refined.



### DESIGN

Ambry double deck 4 basket combination is designed to take full advantage of the corner position. Avoid dividing the left and right sides of the installation. This will save time and effort during installation.

### FUNCTION

It is equipped with a split linkage device, which greatly enhances the door buffer effect of the products, thereby ensuring the best level of comfort for users.



### MATERIAL

This product is made of high quality steel glass even with excellent visual effect, a bottom plate with embossed shading design to prevent beams from slipping out of the pull-out.

### INSTALLATION

The optimum cabinet board thickness is 16-18 mm, which is suitable for standard cabinets.

## SWING TRAY (SOFT CLOSE)

SIZE	ITEM CODE
900mm (LEFT)	HE-ST01
900mm (RIGHT)	HE-ST02



### FEATURE

To increase the strength all of the supporting components are made of die-cast with zinc alloy. European make, made the entire ambry more stylish and refined.

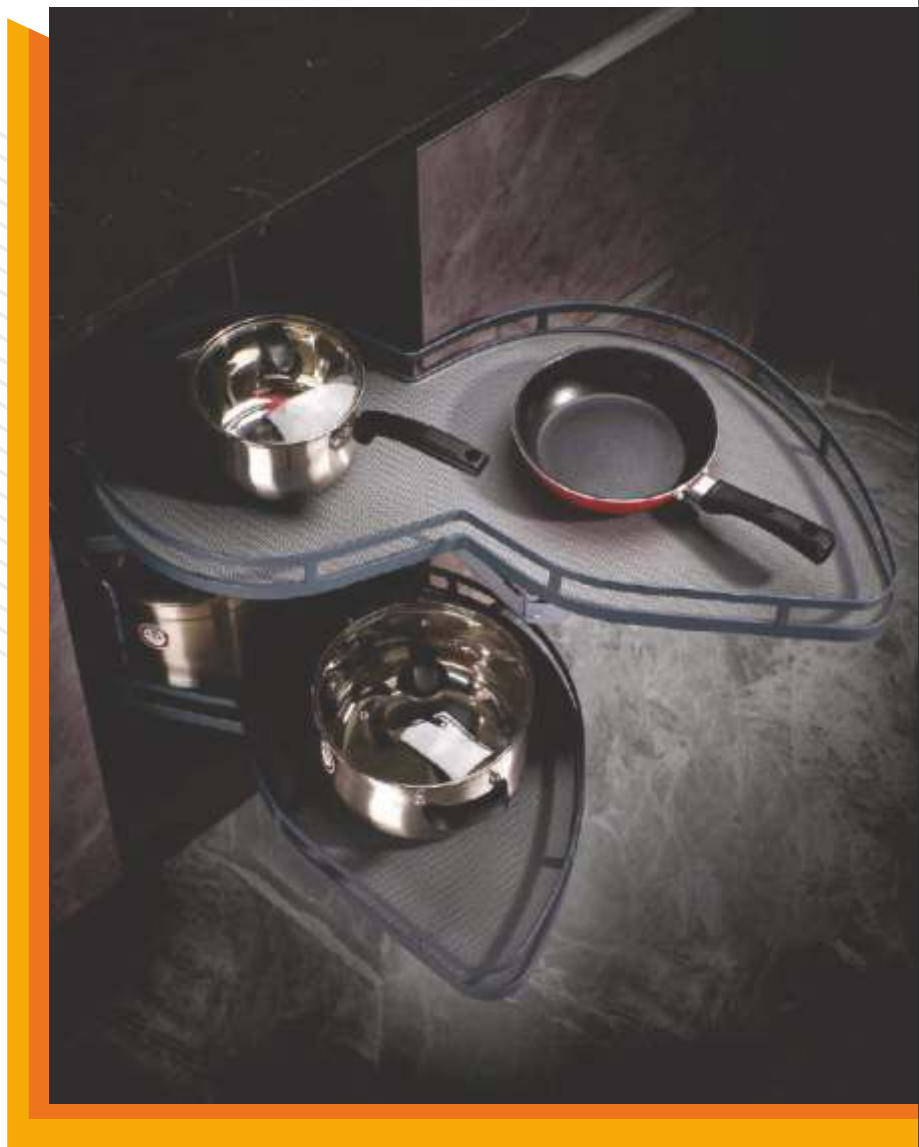


### DESIGN

Taking full advantage of corner position, the S-type integrated design allows the cabinet to store all items at once for convenient access.

### FUNCTION

It is equipped with a split linkage device, which greatly enhances the door buffer effect of the products, thereby ensuring the best level of comfort for users.



### MATERIAL

The frame and parts are made from high-quality steel, its surface is painted, and the bottom plate is embossed with a textured pattern that prevents articles from slipping when pulled out or retracted.

### INSTALLATION

The optimum cabinet board thickness is 16-18 mm, which is suitable for standard cabinets.



## GLASS SIDE MOUNTED B/P/O (SOFT CLOSE)

SIZE	ITEM CODE
150mm	HE-SM01
200mm	HE-SM02
250mm	HE-SM03

### FEATURE

In order to solve the storage problem of small kitchen space, the basket frame adopts a side installation design. This high-quality tempered glass edge is detachable and easy to clean.



150mm



200mm



250mm

### DESIGN

Basket frame is designed with a side installation design to solve the storage problem in small kitchen spaces and maximize the use of space.

### FUNCTION

The rack can be smoothly slid with a fully concealed soft-closing system.

### MATERIAL

Original thickened top frame with surface fluorocarbon treatment and three-steel bead rail combination which is durable and rust-resistant.

### INSTALLATION

The optimum cabinet board thickness is 18 mm, which is suitable for standard cabinets.

## GLASS BASE MOUNTED B/P/O (SOFT CLOSE)

SIZE	ITEM CODE
150MM (2 SHELF)	HE-BM01
200MM (2 SHELF)	HE-BM02
250MM (2 SHELF)	HE-BM03
150MM (3 SHELF)	HE-BM11
200MM (3 SHELF)	HE-BM12
250MM (3 SHELF)	HE-BM13



### FEATURE

In order to solve the storage problem of small kitchen space, the basket frame adopts a side installation design. This high-quality tempered glass edge is detachable and easy to clean.

### DESIGN

Basket frame is designed with a side installation design to solve the storage problem in small kitchen spaces and maximize the use of space.

### FUNCTION

The rack can be smoothly slid with a fully concealed soft-closing system.



### MATERIAL

Original thickened top frame with surface fluorocarbon treatment and three-steel bead rail combination which is durable and rust-resistant.

### INSTALLATION

The optimum cabinet board thickness is 18 mm, which is suitable for standard cabinets.





## ELEVATOR LIFTER (SOFT CLOSE)

SIZE	ITEM CODE
600mm	HE-EL01
900mm	HE-EL02



### FEATURE

In actual storage situations, the tension and resilience can be adjusted. The palm handle provides a comfortable grip.



### DESIGN

Designed with a new environmental protection material, the basket is not only sturdy and beautiful, but also has more bearing force because it is made from two special boards. European make more decorative and chic.

### FUNCTION

Two-way buffer with strong load-bearing capacity for quiet movement of the product during use.



### MATERIAL

Durability and luxury are ensured by the visualised toughened glass edge and cold rolled iron plate material.

### INSTALLATION

The optimum cabinet board thickness is 18 mm, which is suitable for standard cabinets and helps with easy installation.

# ROLLING SHUTTER

SIZE	ITEM CODE
(PVC)-450mm-BLACK	HE-PV01
(PVC)-600mm-BLACK	HE-PV02
(PVC)-450mm-WHITE	HE-PV11
(PVC)-600mm-WHITE	HE-PV12

SIZE	ITEM CODE
ALUMINUM 450mm- SILVER	HE-AL01
ALUMINUM 600mm- SILVER	HE-AL02

SIZE	ITEM CODE
GLASS 450mm- BLACK	HE-GL01
GLASS 600mm- BLACK	HE-GL02
GLASS 450mm- WHITE	HE-GL11
GLASS 600mm- WHITE	HE-GL12



## FEATURE

- Easy to Operate
- Easy and fast installation
- No special tooling is required



PVC



Glass



Aluminium





# OPAL SERIES





# SLIM BOX DRAWER SYSTEM



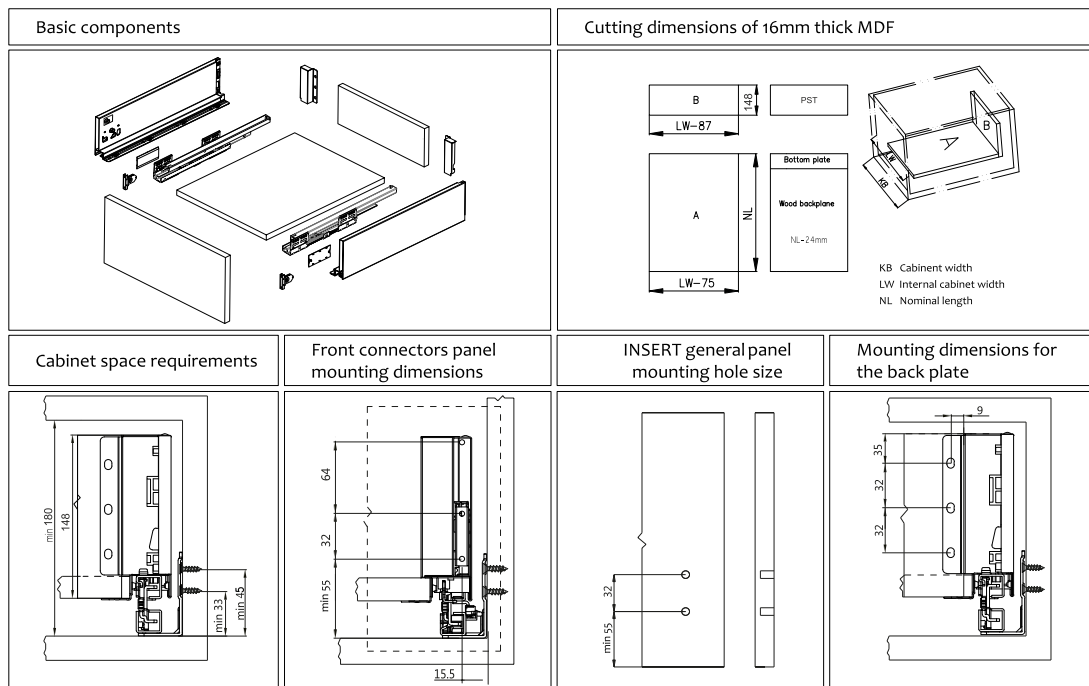
86mm



150mm



182mm



## FEATURES

- 3-dimensional adjustment
- Full extension synchronized concealed slides
- Integrated side, height and tilt angle adjustment
- Full extension with soft closing
- Epoxy coated with rust proofing
- Tool-free assembly & removal of drawer
- Less effort & smooth in performance
- Loading capacity: 50kg/500mm
- 80,000 times cycle test & 48-hour
- Salt spray guaranteed

SIZE	ITEM CODE	STANDARD PACKING
300mm-86mm	HO-S811	6
300mm-150mm	HO-S812	4
300mm-182mm	HO-S813	4
350mm-86mm	HO-S821	6
350mm-150mm	HO-S822	4
350mm-182mm	HO-S823	4
400mm-86mm	HO-S831	6
400mm-150mm	HO-S832	4
400mm-182mm	HO-S833	4
450mm-86mm	HO-S841	6
450mm-150mm	HO-S842	4
450mm-182mm	HO-S843	4
500mm-86mm	HO-S851	6
500mm-150mm	HO-S852	4
500mm-182mm	HO-S853	4
550mm-86mm	HO-S861	6
550mm-150mm	HO-S862	4
550mm-182mm	HO-S863	4
600mm-86mm	HO-S871	6
600mm-150mm	HO-S872	4
600mm-182mm	HO-S873	4

## SLIM TANDEM FRONT BAR CONNECTOR



SIZE	ITEM CODE
86mm (L&R) CONNECTOR	HO-BAR01
150mm (L&R) CONNECTOR	HO-BAR02
182mm (L&R) CONNECTOR	HO-BAR03
FRONT SQUARE BAR (1200mm)	HO-BAR04

## SLIM TANDEM FRONT GLASS CONNECTOR



SIZE	ITEM CODE
150mm (L&R) CONNECTOR	HO-GLS02
182mm (L&R) CONNECTOR	HO-GLS03
FRONT PANNEL (1200mm)	HO-GLS04

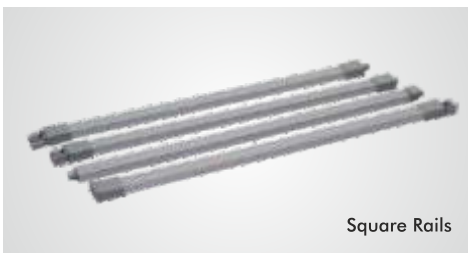
## TANDEM BOX DRAWER SYSTEM



Drawer Side (L&R)



Concealed Slide (L&R)



Square Rails



Rear Connectors

Front Connectors



### FEATURES

- 2-spring soft closing design
- Full extension synchronized concealed slides.
- Easy to install & maintain
- Full extension with silent system
- Epoxy Coated with rust proofing
- Tool-free assembly and removal of drawer
- Long lasting durable mechanism
- Loading capacity - 50kgs/500mm
- 50000 times cycle test & 72- hour salt spray guaranteed

SIZE	ITEM CODE	STANDARD PACKING
400mm-0	HO-T931	6
400mm-SINGLE	HO-T932	6
400mm-DOUBLE	HO-T933	6
450mm-0	HO-T941	6
450mm-SINGLE	HO-T942	6
450mm- DOUBLE	HO-T943	6
500mm-0	HO-T951	6
500mm-SINGLE	HO-T952	6
500mm-DOUBLE	HO-T953	6
550mm-0	HO-T961	6
550mm- SINGLE	HO-T962	6
550mm-DOUBLE	HO-T963	6

## WOODEN CUTLERY



SIZE	ITEM CODE
450mm TO 600mm	HO-WC01
600mm TO 900mm	HO-WC02



## PVC CUTLERY

SIZE	ITEM CODE
450mm	HO-PC01
500mm	HO-PC02
600mm	HO-PC03
700mm	HO-PC04
800mm	HO-PC05
900mm	HO-PC06

SIZE	ITEM CODE
450mm-4"	HO-WB01
450mm-6"	HO-WB02
450mm-8"	HO-WB03
600mm-4"	HO-WB11
600mm-6"	HO-WB12
600mm-8"	HO-WB13

## WICKER BASKET



SIZE	ITEM CODE
500mm-C/S	HO-ATT01
500mm-PLATE	HO-ATT02
500mm-THALI	HO-ATT03
550mm-C/S	HO-ATT11
550mm-PLATE	HO-ATT12
550mm-THALI	HO-ATT13

## SLIM / TANDEM ATTACHMENT

## SWING -OUT BIN



SIZE	ITEM CODE
------	-----------

8 LTR	HO-SB01
-------	---------

14 LTR	HO-SB02
--------	---------



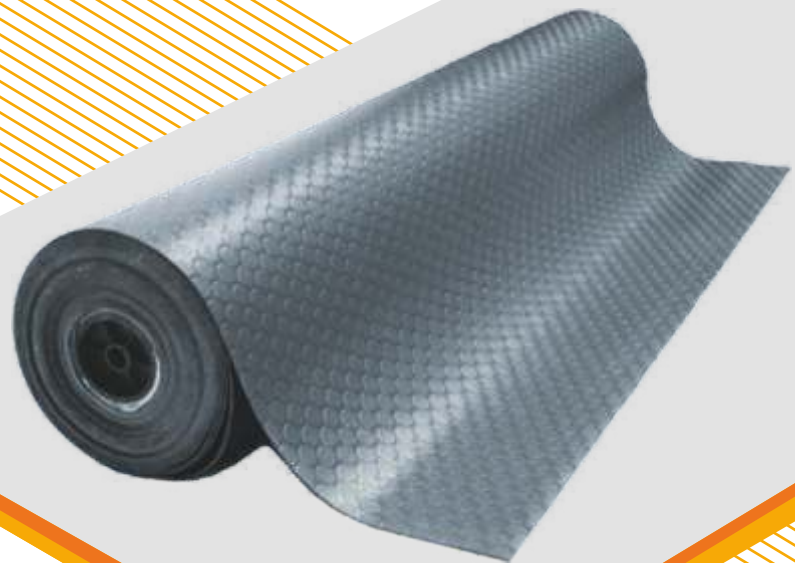
SIZE	ITEM CODE
------	-----------

40LTR(20X2)	HO-PB01
-------------	---------

## PULLOUT BIN ( SOFT CLOSE )

SIZE	ITEM CODE
600mm	HO-DS01
700mm	HO-DS02
800mm	HO-DS03
900mm	HO-DS04

## DISH RACK

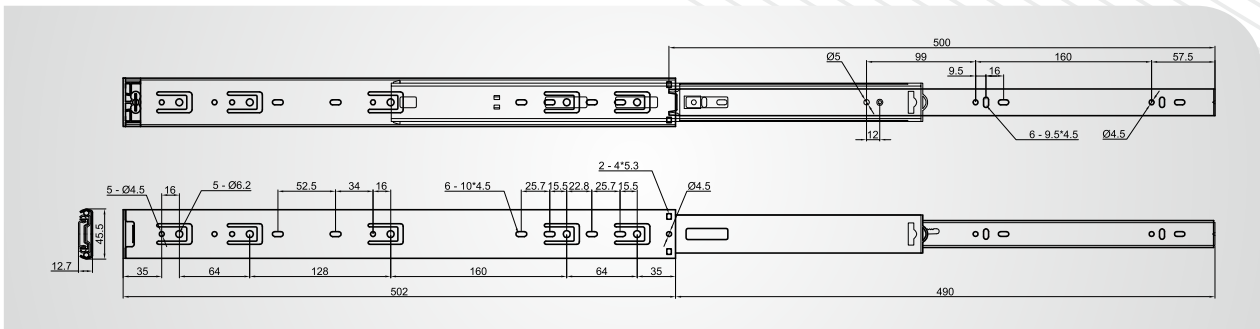


SIZE	ITEM CODE
500mm X 20MTR	HO-KM01
550mm X 20MTR	HO-KM02

## KITCHEN MAT ROLL



## BALL BEARING DRAWER SLIDES (PREMIUM)



SIZE	ITEM CODE	STANDARD PACKING
200mm (8")	HO-2008	10 Set
250mm (10")	HO-2010	10 Set
300mm (12")	HO-2012	10 Set
350mm (14")	HO-2014	10 Set
400mm (16")	HO-2016	10 Set
450mm (18")	HO-2018	10 Set
500mm (20")	HO-2020	10 Set
550mm (22")	HO-2022	10 Set
600mm (24")	HO-2024	10 Set
650mm (26")	HO-2026	10 Set
700mm (28")	HO-2028	10 Set
750mm (30")	HO-2030	10 Set
800mm (32")	HO-2032	10 Set
850mm (34")	HO-2034	10 Set
900mm (36")	HO-2036	10 Set

### SPECIFICATION

- Thickness: 1.2x1.2x1.2mm
- Loading capacity: 45kg/500mm
- Finish: Clear Zinc plating
- Length (mm): 200 - 900mm (8"-36")

### FEATURES

- Easy installation and quick separation mechanism
- Precision steel ball bearings offer high lateral stability
- Fine adjustment gap allowed during fixing
- Effortless one finger operation
- 45000 cycle tests and 72-hour salt spray guaranteed

Also available in BLACK - E coating

## CLIP-ON HINGES (3D SOFT CLOSE)

Stainless steel



0 CRANK

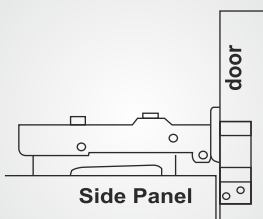


8 CRANK

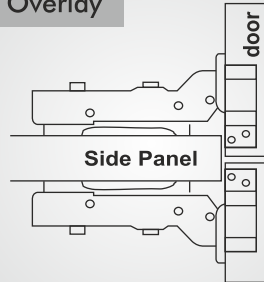


15 CRANK

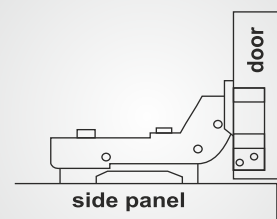
### Full Overlay



### Half Overlay



### Inset Overlay



SIZE	ITEM CODE
0 CRANK	HO-H111
8 CRANK	HO-H112
15 CRANK	HO-H113

### SPECIFICATION

- Stainless steel material for long rust free life
- Mounting plate : up and down adjustable
- 3D adjustment allows horizontal (side) and vertical (height) adjustment along with distance between cabinet shutter and side wall without uninstalling shutter
- One screw solution for vertical adjustment
- Clip on mechanism for easy installation and removal of shutter
- Wide plate hinges for strong holding of shutter
- Specially designed cylinder for smooth closing of shutter
- Wide opening angle for easy storage in cabinet
- 50000 times cycle test & 72- hour salt spray guaranteed

### FEATURES

- Opening Angle: 95°-110°
- Depth of Hinge Cup: 11.5mm
- Diameter of Hinge Cup: 35mm
- Door Thickness: 14-24mm
- Finish: Nickel plated





- RUBY SERIES
- APEX SERIES
- VELVET SERIES
- ELITE SERIES
- PEARL SERIES

## Modular Kitchen Accessories

## PLAIN BASKET



SIZE	ITEM CODE
15X20X4	HR-1001
15X20X6	HR-1002
15X20X8	HR-1003
17X20X4	HR-1101
17X20X6	HR-1102
17X20X8	HR-1103
19X20X4	HR-1201
19X20X6	HR-1202
19X20X8	HR-1203
21X20X4	HR-1301
21X20X6	HR-1302
21X20X8	HR-1303



## CUP & SAUCER BASKET

SIZE	ITEM CODE
15X20X4	HR-1004
17X20X4	HR-1104
19X20X4	HR-1204
21X20X4	HR-1304

## CUTLERY BASKET

SIZE	ITEM CODE
15X20X4	HR-1005
17X20X4	HR-1105
19X20X4	HR-1205
21X20X4	HR-1305



SIZE	ITEM CODE
15X20X6	HR-1006
17X20X6	HR-1106
19X20X6	HR-1206
21X20X6	HR-1306

## PLATE BASKET

## THALI BASKET



SIZE	ITEM CODE
15X20X8	HR-1007
17X20X8	HR-1107
19X20X8	HR-1207
21X20X8	HR-1307



## BOTTLE PULLOUT

SIZE	ITEM CODE
4X20X17 (2 SHELF)	HR-BP01
6X20X17 (2 SHELF)	HR-BP02
8X20X17 (2 SHELF)	HR-BP03
4X20X21 (3 SHELF)	HR-BP11
6X20X21 (3 SHELF)	HR-BP12
8X20X21 (3 SHELF)	HR-BP13

## GRAIN TROLLEY BASKET (WITH SOFT CLOSE MECHANISM)



SIZE	ITEM CODE
15X20X10	HR-1008
17X20X10	HR-1108
19X20X10	HR-1208
21X20X10	HR-1308



FITTING  
ACCESSORIES



## PLAIN BASKET



SIZE	ITEM CODE
15X20X4	HA-2001
15X20X6	HA-2002
15X20X8	HA-2003
17X20X4	HA-2101
17X20X6	HA-2102
17X20X8	HA-2103
19X20X4	HA-2201
19X20X6	HA-2202
19X20X8	HA-2203
21X20X4	HA-2301
21X20X6	HA-2302
21X20X8	HA-2303

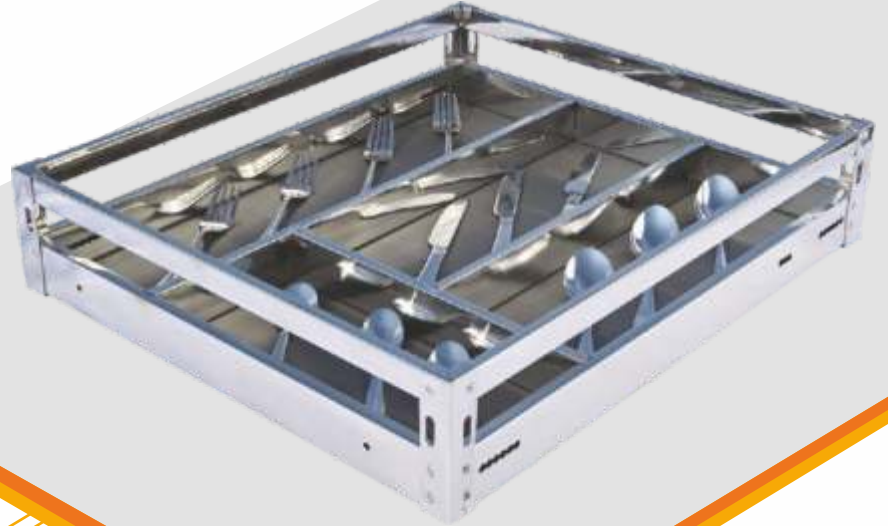


## CUP & SAUCER BASKET

SIZE	ITEM CODE
15X20X4	HA-2004
17X20X4	HA-2104
19X20X4	HA-2204
21X20X4	HA-2304

SIZE	ITEM CODE
15X20X4	HA-2005
17X20X4	HA-2105
19X20X4	HA-2205
21X20X4	HA-2305

## CUTLERY BASKET



SIZE	ITEM CODE
15X20X6	HA-2006
17X20X6	HA-2106
19X20X6	HA-2206
21X20X6	HA-2306

## PLATE BASKET

## THALI BASKET



SIZE	ITEM CODE
15X20X8	HA-2007
17X20X8	HA-2107
19X20X8	HA-2207
21X20X8	HA-2307



## BOTTLE PULLOUT

SIZE	ITEM CODE
4X20X17 (2 SHELF)	HA-BP01
6X20X17 (2 SHELF)	HA-BP02
8X20X17 (2 SHELF)	HA-BP03
4X20X21 (3 SHELF)	HA-BP11
6X20X21 (3 SHELF)	HA-BP12
8X20X21 (3 SHELF)	HA-BP13



## VELVET SERIES

**PLAIN BASKET**



SIZE	ITEM CODE
15X20X4	HV-3001
15X20X6	HV-3002
15X20X8	HV-3003
17X20X4	HV-3101
17X20X6	HV-3102
17X20X8	HV-3103
19X20X4	HV-3201
19X20X6	HV-3202
19X20X8	HV-3203
21X20X4	HV-3301
21X20X6	HV-3302
21X20X8	HV-3303

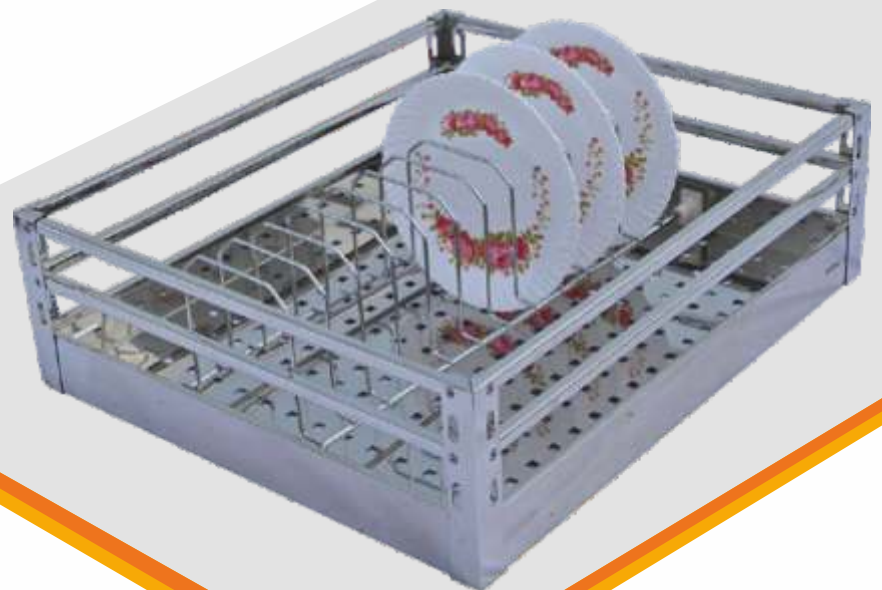


**CUP & SAUCER BASKET**

SIZE	ITEM CODE
15X20X4	HV-3004
17X20X4	HV-3104
19X20X4	HV-3204
21X20X4	HV-3304

## CUTLERY BASKET

SIZE	ITEM CODE
15X20X8	HV-3005
17X20X8	HV-3105
19X20X8	HV-3205
21X20X8	HV-3305



SIZE	ITEM CODE
15X20X6	HV-3006
17X20X6	HV-3106
19X20X6	HV-3206
21X20X6	HV-3306

## PLATE BASKET

## THALI BASKET



SIZE	ITEM CODE
15X20X8	HV-3007
17X20X8	HV-3107
19X20X8	HV-3207
21X20X8	HV-3307



## BOTTLE PULLOUT

SIZE	ITEM CODE
4X20X17 (2 SHELF)	HV-BP01
6X20X17 (2 SHELF)	HV-BP02
8X20X17 (2 SHELF)	HV-BP03
4X20X21 (3 SHELF)	HV-BP11
6X20X21 (3 SHELF)	HV-BP12
8X20X21 (3 SHELF)	HV-BP13



## ELITE SERIES





## PLAIN BASKET

Also available In depth  
16", 18", 22", 24" on order.



SIZE	ITEM CODE
15X20X4	HEL-101
15X20X6	HEL-102
15X20X8	HEL-103
17X20X4	HEL-201
17X20X6	HEL-202
17X20X8	HEL-203
19X20X4	HEL-301
19X20X6	HEL-302
19X20X8	HEL-303
21X20X4	HEL-401
21X20X6	HEL-402
21X20X8	HEL-403



## CUP & SAUCER BASKET

Also available In depth  
16", 18", 22", 24" on order.

SIZE	ITEM CODE
15X20X4	HEL-104
17X20X4	HEL-204
19X20X4	HEL-304
21X20X4	HEL-404

## CUTLERY BASKET

Also available In depth  
16", 18", 22", 24" on order.



SIZE	ITEM CODE
15X20X4	HEL-105
17X20X4	HEL-205
19X20X4	HEL-305
21X20X4	HEL-405



## PLATE BASKET

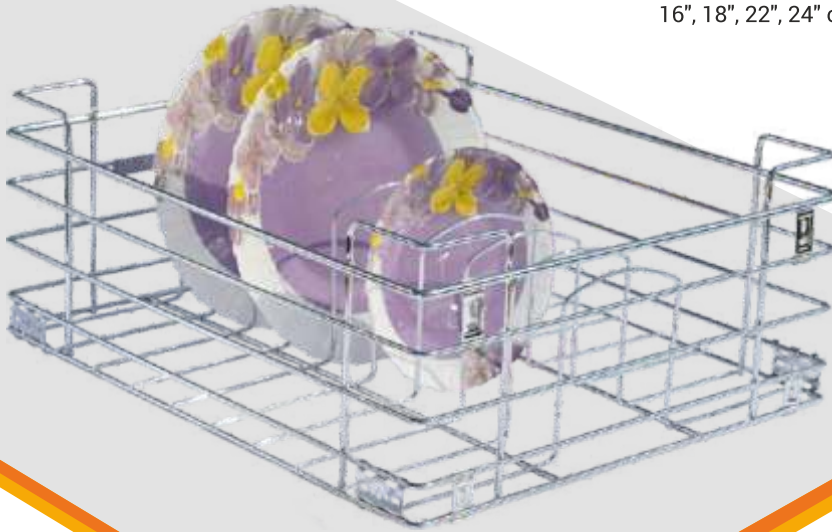
Also available In depth  
16", 18", 22", 24" on order.



SIZE	ITEM CODE
15X20X6	HEL-106
17X20X6	HEL-206
19X20X6	HEL-306
21X20X6	HEL-406

## THALI BASKET

Also available In depth  
16", 18", 22", 24" on order.



SIZE	ITEM CODE
15X20X8	HEL-107
17X20X8	HEL-207
19X20X8	HEL-307
21X20X8	HEL-407



## PARTITION BASKET

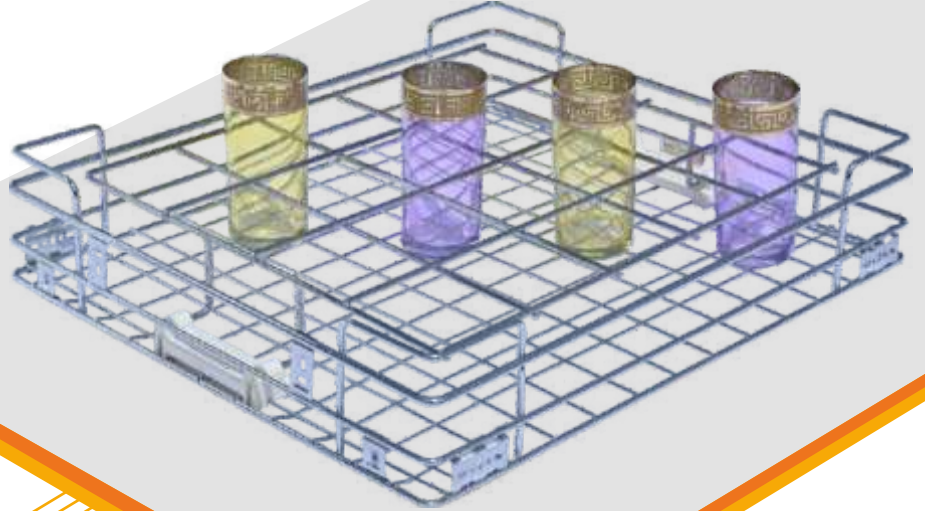
Also available In depth  
16", 18", 22", 24" on order.

SIZE	ITEM CODE
15X20X4	HEL-108
15X20X6	HEL-109
15X20X8	HEL-110
17X20X4	HEL-208
17X20X6	HEL-209
17X20X8	HEL-210
19X20X4	HEL-308
19X20X6	HEL-309
19X20X8	HEL-310
21X20X4	HEL-408
21X20X6	HEL-409
21X20X8	HEL-410

SIZE	ITEM CODE
15X20X4	HEL-111
17X20X4	HEL-211
19X20X4	HEL-311
21X20X4	HEL-411

## GLASS BASKET

Also available In depth  
16", 18", 22", 24" on order.



SIZE	ITEM CODE
15X20X6	HEL-112
17X20X6	HEL-212
19X20X6	HEL-312
21X20X6	HEL-412

## BOTTLE BASKET

Also available In depth  
16", 18", 22", 24" on order.



## VEGETABLE BASKET

Also available In depth  
16", 18", 22", 24" on order.



SIZE	ITEM CODE
15X20X6	HEL-113
17X20X6	HEL-213
19X20X6	HEL-313
21X20X6	HEL-413



## LARGE UTENSIL BASKET

Also available In depth  
16", 18", 22", 24" on order.

SIZE	ITEM CODE
24X20X4	HEL-501
24X20X6	HEL-502
24X20X8	HEL-503
28X20X4	HEL-601
28X20X6	HEL-602
28X20X8	HEL-603
32X20X4	HEL-701
32X20X6	HEL-702
32X20X8	HEL-703

## ELITE SERIES

WIRE BASE

**Hi-Class®**  
Style & Luxury at Economy

### GRAIN TROLLEY (WIRE)

Also available In depth  
16", 18", 22", 24" on order.



SIZE	ITEM CODE
15X20X10	HEL-114
17X20X10	HEL-214
19X20X10	HEL-314
21X20X10	HEL-414



SIZE	ITEM CODE
15X20X10	HEL-115
17X20X10	HEL-215
19X20X10	HEL-315
21X20X10	HEL-415

### GRAIN TROLLEY (WITH MECHANISM)

## BOTTLE PULLOUT

Also available In depth  
16", 18", 22", 24" on order.



SIZE	ITEM CODE
4X20X17 (2 SHELF)	HEL-BP01
6X20X17 (2 SHELF)	HEL-BP02
8X20X17 (2 SHELF)	HEL-BP03
4X20X21 (3 SHELF)	HEL-BP11
6X20X21 (3 SHELF)	HEL-BP12
8X20X21 (3 SHELF)	HEL-BP13



## SINGLE PULLOUT

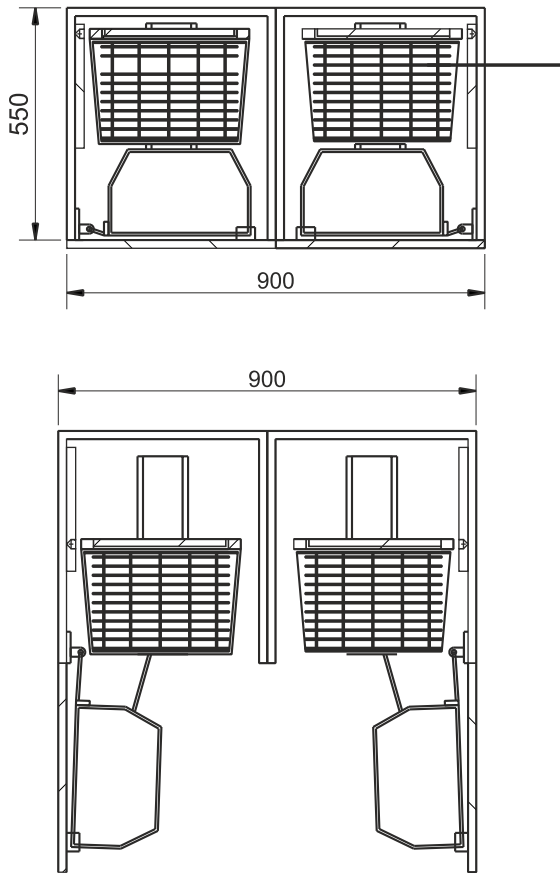
Also available In depth  
16", 18" on order.

SIZE	ITEM CODE
4X20X24	HEL-S01
6X20X24	HEL-S02
8X20X24	HEL-S03
4X22X24	HEL-S11
6X22X24	HEL-S12
8X22X24	HEL-S13
4X24X24	HEL-S21
6X24X24	HEL-S22
8X24X24	HEL-S23

# ELITE SERIES

WIRE BASE

Hi-Class®  
Style & Luxury at Economy



NOTE : ALL THE ABOVE SIZE ARE CARCASE SIZE IN MM



SIZE	ITEM CODE
450mm-4FT	HEL-P01
450mm-6FT	HEL-P02
600mm-4FT	HEL-P11
600mm-6FT	HEL-P12

PANTRY /P/O  
(WIRE)



## PLAIN BASKET

Also available In depth  
16", 18", 22", 24" on order.



SIZE	ITEM CODE
15X20X4	HP-101
15X20X6	HP-102
15X20X8	HP-103
17X20X4	HP-201
17X20X6	HP-202
17X20X8	HP-203
19X20X4	HP-301
19X20X6	HP-302
19X20X8	HP-303
21X20X4	HP-401
21X20X6	HP-402
21X20X8	HP-403



## CUP & SAUCER BASKET

Also available In depth  
16", 18", 22", 24" on order.

SIZE	ITEM CODE
15X20X4	HP-104
17X20X4	HP-204
19X20X4	HP-304
21X20X4	HP-404

# PEARL SERIES

WIRE BASE

**Hi-Class®**  
Style & Luxury at Economy

SIZE	ITEM CODE
15X20X4	HP-105
17X20X4	HP-205
19X20X4	HP-305
21X20X4	HP-405

## CUTLERY BASKET (SHEET)

Also available In depth  
16", 18", 22", 24" on order.



SIZE	ITEM CODE
15X20X6	HP-106
17X20X6	HP-206
19X20X6	HP-306
21X20X6	HP-406

## PLATE BASKET

Also available In depth  
16", 18", 22", 24" on order.

## THALI BASKET

Also available In depth  
16", 18", 22", 24" on order.



SIZE	ITEM CODE
15X20X8	HP-107
17X20X8	HP-207
19X20X8	HP-307
21X20X8	HP-407



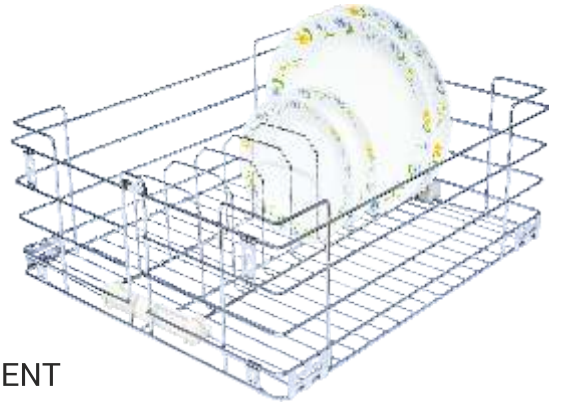
## PARTITION BASKET

Also available In depth  
16", 18", 22", 24" on order.

SIZE	ITEM CODE
15X20X4	HP-108
15X20X6	HP-109
15X20X8	HP-110
17X20X4	HP-208
17X20X6	HP-209
17X20X8	HP-210
19X20X4	HP-308
19X20X6	HP-309
19X20X8	HP-310
21X20X4	HP-408
21X20X6	HP-409
21X20X8	HP-410

## FOLDABLE ATTACHMENT

Also available In depth  
16", 18", 20", 22", 24" on order.



CUP & SAUCER ATTACHMENT  
HU-ATT01

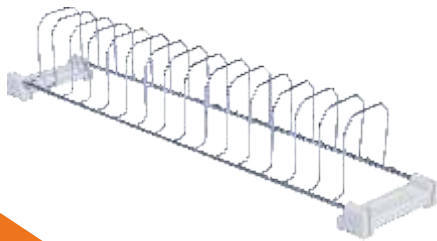
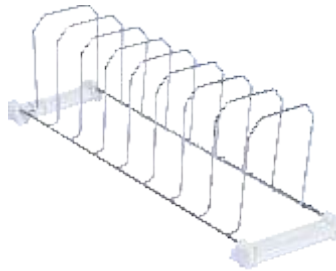
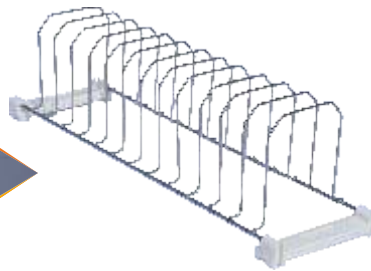


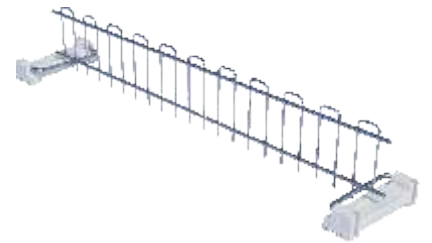
PLATE ATTACHMENT  
HU-ATT02



THALI ATTACHMENT  
HU-ATT03



PARTITION ATTACHMENT 4"  
HU-ATT04



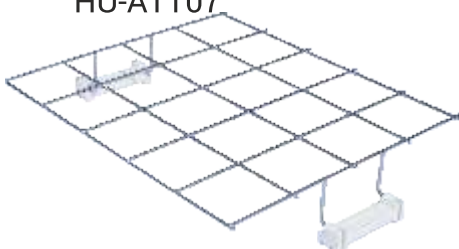
PARTITION ATTACHMENT 6"  
HU-ATT05



PARTITION ATTACHMENT 8"  
HU-ATT06



GLASS ATTACHMENT  
HU-ATT07



BOTTLE ATTACHMENT  
HU-ATT08







## UTILITY ACCESSORIES

**CORNER  
RACK 1 SHELF**  
HU-1001



**MULTIPURPOSE  
1 SHELF**  
HU-1003



**CORNER  
RACK 2 SHELF**  
HU-1002

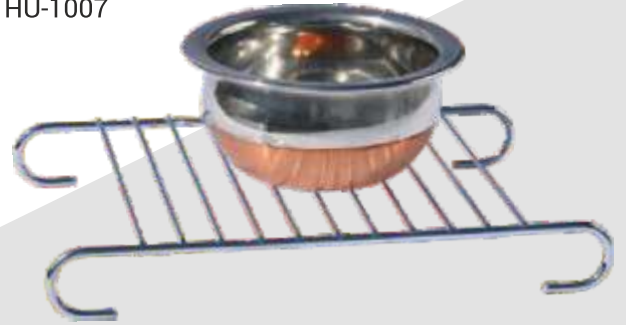


**MULTIPURPOSE  
2 SHELF**  
HU-1006



KITCHEN  
KEEPER  
HU-1005

HOT STAND  
HU-1007



FRUIT RACK  
HU-1006



ROLLING  
PIN STAND  
HU-1008



**CYLINDER  
TROLLEY**

HU-1009



**MOBILE  
STAND**

HU-1011



**WINE GLASS  
HOLDER DOUBLE**

HU-1010



**USE ME**

HU-1012

**BIN HOLDER**  
HU-1013



**DETERGENT  
HOLDER**  
HU-1015



**LAUNDRY  
BASKET**  
HU-1014



**UNDER SINK  
BASKET**  
HU-1016

**PERFUME RACK**  
HU-1017



**UNDER SHELF BASKET**  
HU-1019



**SHOE P/O RACK**  
HU-1018



**SHOE RACK**  
HU-1020





Design a modern, convenient & aesthetic kitchen, wardrobe or bathroom with Hi-Class Designer Accessories.

Choose from superior quality, strong, safe and beautiful range of accessories by High Class.

AN ISO 9001 : 2008 Company

 **Hi-Class**<sup>®</sup>  
*Style & Luxury at Economy*

✉ [info@hiclass.co.in](mailto:info@hiclass.co.in)  [hiclass.co.in](http://hiclass.co.in)